

PART OF THE NE 1/4, SEC. 27, T.5N., R.1W., S.L.B. & M.  
**THE ORCHARD AT UINTAH NO. 2**

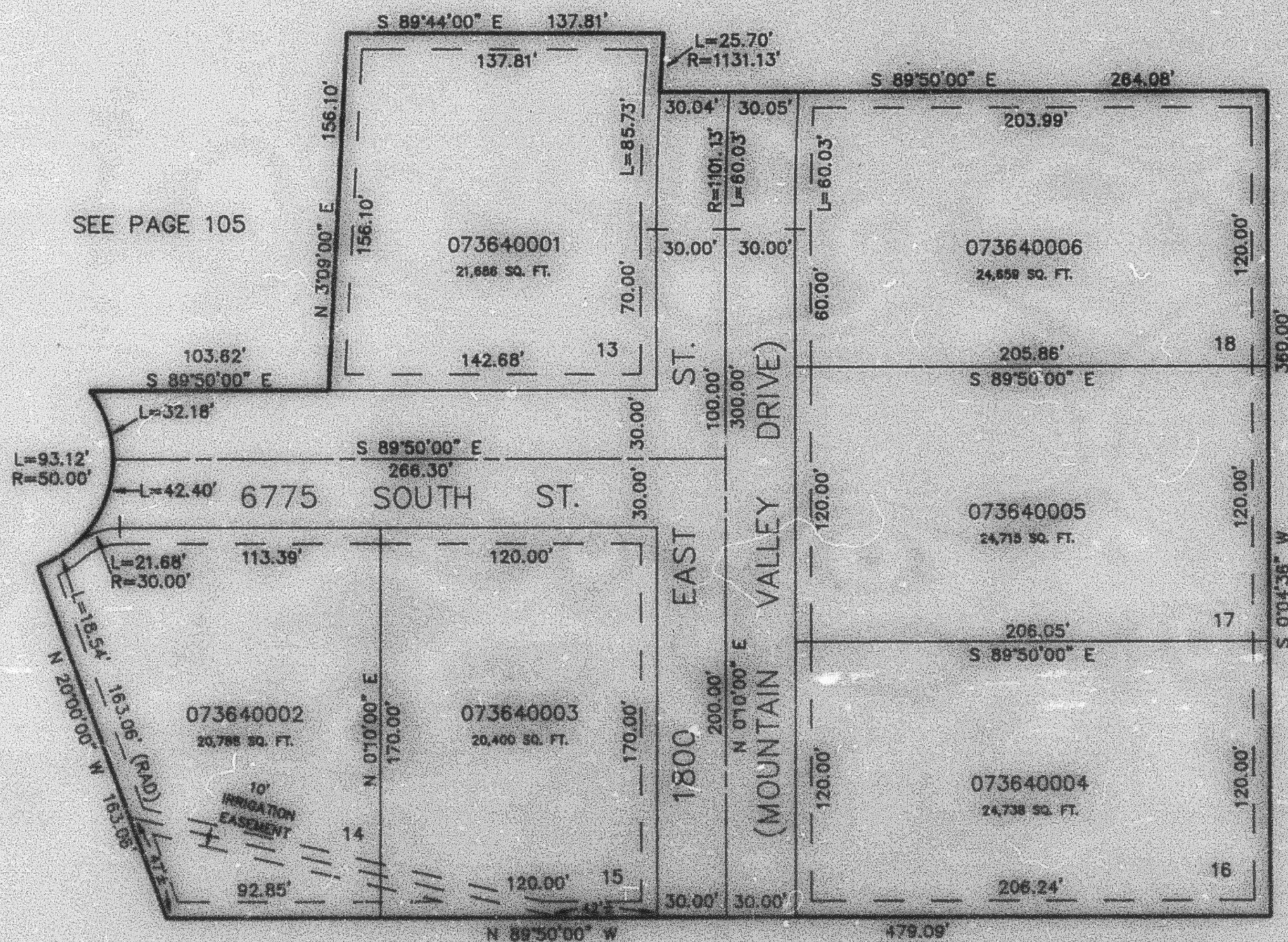
IN UINTAH TOWN

SCALE 1" = 50'

TAXING UNIT: 58

UNLESS OTHERWISE SHOWN,  
 ALL LOTS ARE OWNED BY:  
 LANDMARK CONSTRUCTION, INC.

SEE PAGE 105



SEE PAGE 105

SEE PAGE 105

7' UTILITY & DRAINAGE EASEMENTS EACH  
 SIDE OF PROPERTY LINES AS INDICATED  
 BY DASHED LINES EXCEPT AS OTHERWISE  
 SHOWN.

FOR COMPLETE ENG. DATA SEE  
 ORIGINAL DEDICATION PLAT IN  
 BOOK 31, PAGE 76 OF RECORDS.